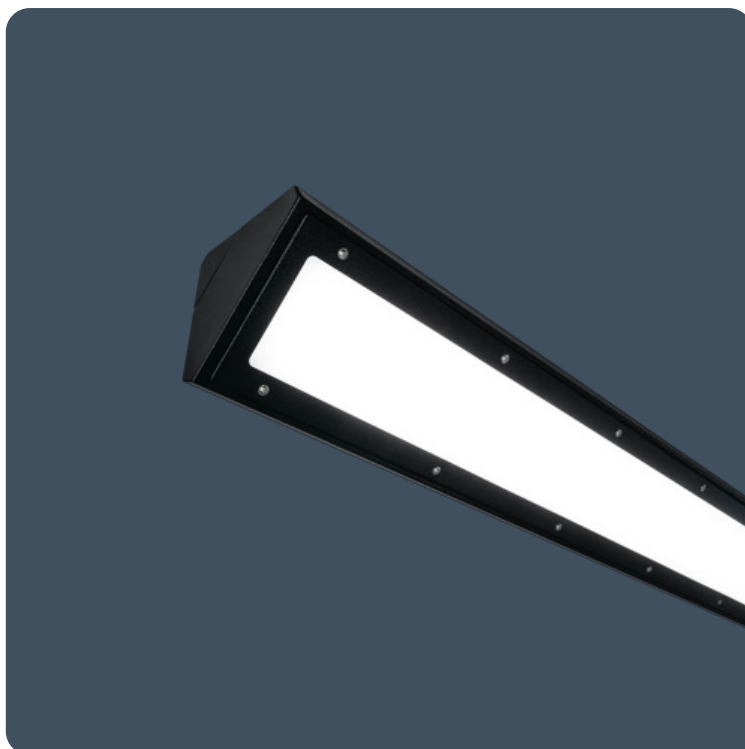


Vandal-resistant sealed luminaires

Vandal-resistant sealed luminaires complying with M.O.D. JSP482 document for 'Category C' areas and IK11 - high impact strength, satin polycarbonate front cover. Infills available for continuous mounting.

Applications: underpass lighting, subways.

- High impact strength diffuser
- Continuous mounting available using infills
- Luminaires supplied with corner mount kit
- Complies with M.O.D. JSP482 Document for 'Category C' areas



IP66

IK11

Up to 125.9 LL/CW

Specification

Mounting	Surface	IP rating	IP66
Impact rating	IK11	Nominal size	1600 mm

Lighting

Optic	Satin diffuser	Lumen output	4,030 lm - 7,995 lm
Efficacy	Up to 125.9 LL/CW		

Emergency data

Emergency lumen output	365 lm	Emergency type	Maintained
Emergency duration	3 hours	Battery specification	Nickel Metal Hydride (NiMH)

Power

LED power	27 W - 60 W	Circuit power	32 W - 69 W
-----------	-------------	---------------	-------------

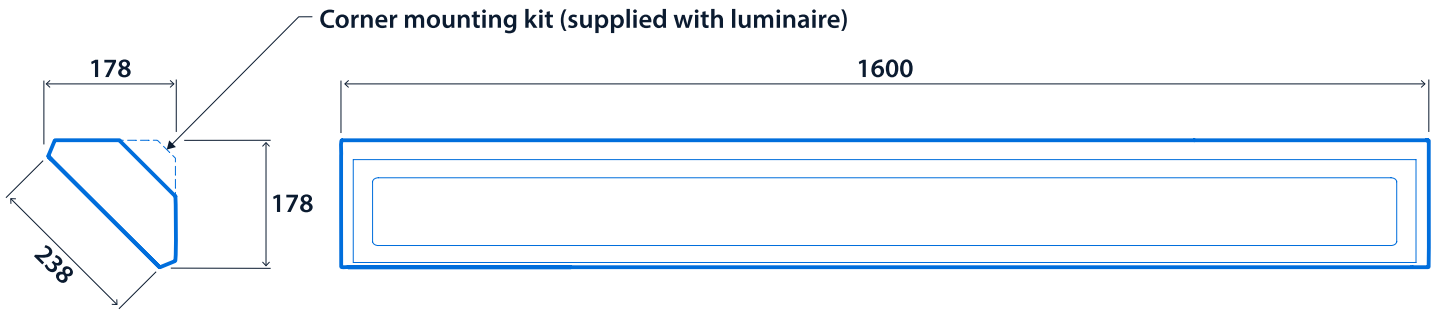
LED characteristics

CRI	80+	Colour temperature	4000 K
Rated life (hours)	100 K - L80/B10		

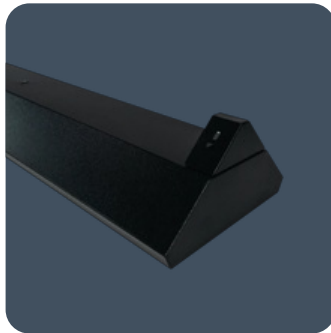
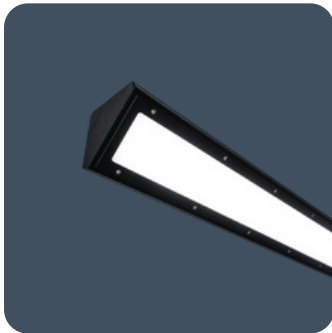
Compliance

UKCA	Yes	CE	Yes
Energy efficiency class	This product contains a light source of energy efficiency class B	MOD compliance	JSP482 Chapter 8 Document for 'Category C' areas

Dimensions



NOTE: Supply entries and fixing points to be drilled on site. IP66 integrity must be maintained



Click or scan here
View Vandalux variants using our online filtering tool



Information is correct as of 30 Jan 2025, however must not be interpreted as a guarantee of individual product performance and/or characteristics. We reserve the right to alter specifications and designs without prior notice.