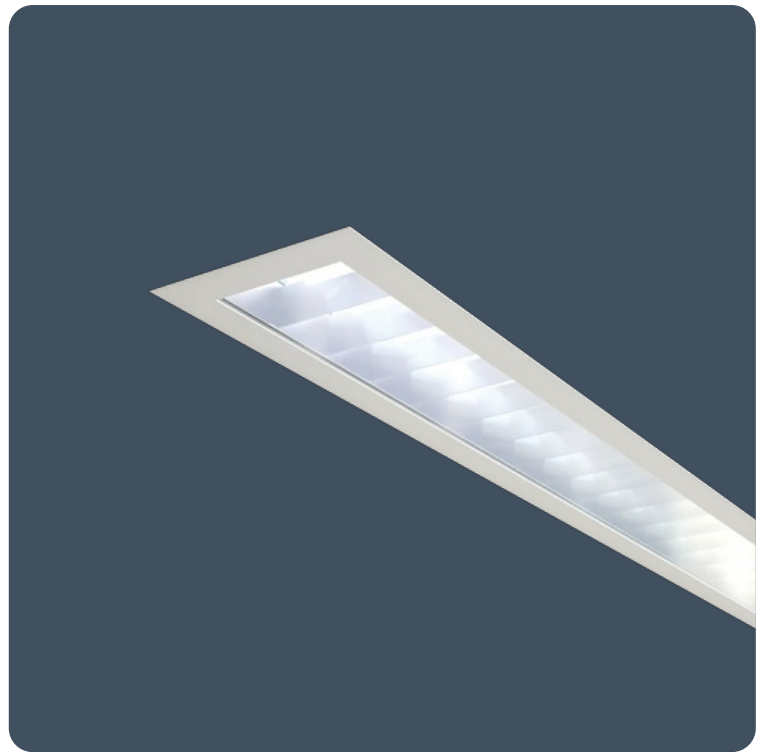


## Recessed luminaires for corridor applications

Recessed LED luminaires suitable for use in both modular and non-modular ceilings. Ultra low glare V-blade louvre or general low glare faceted cross-blade louvre set behind a clear toughened/safety glass cover, satin polycarbonate covers available.

Applications: hospital corridors.

- Snap fix screw-less frame
- Supplied with side arm suspension kit
- Fits 24 mm exposed T-bar ceilings (other ceiling type options available to special order)



IP54

Up to 84.2 LL/CW

## Lighting management

Lighting control system	Dimming (DALI) Non-dimming	Emergency system	AutoTest Emergency Non-emergency Standard Emergency
-------------------------	-------------------------------	------------------	---

## Specification

Mounting	Recessed	IP rating	IP54
Nominal size	1200 x 150 mm		

## Lighting

Optic	Faceted cross-blade louvre Satin diffuser V-blade louvre	Lumen output	3,535 lm - 4,380 lm
Efficacy	Up to 84.2 LL/CW		

## Emergency data

Emergency lumen output	283 lm - 316 lm	Emergency type	Maintained
Emergency duration	3 hours	Battery specification	Nickel Metal Hydride (NiMH)

## Power

LED power	46 W	Circuit power	52 W
-----------	------	---------------	------

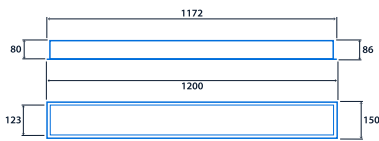
## LED characteristics

CRI	80+	Colour temperature	4000 K
Rated life (hours)	50 K - L70/B10		

## Compliance

UKCA	Yes	CE	Yes
Energy efficiency class	This product contains a light source of Thermoplastic rating energy efficiency class C		TP(a)

## Dimensions



View the range



Information is correct as of 16 Oct 2024, however must not be interpreted as a guarantee of individual product performance and/or characteristics. We reserve the right to alter specifications and designs without prior notice.