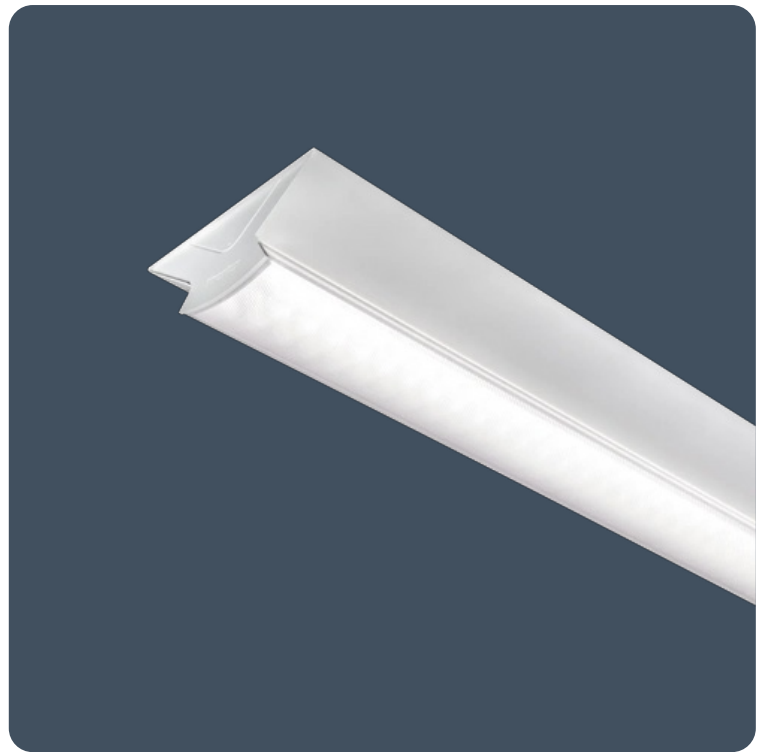


Wide body LED controller luminaires

Stylish LED luminaire designed for rapid installation. All versions have the facility conduit entry at either end as standard, with no additional drilling or cutting required. BESA fixings are located at 600mm centres with multiple cable entries to enable retrofitting without the need to modify the luminaire.

Applications: Hospital, schools, social housing.

- Polycarbonate diffuser: Carefully controlled nanoprism optic version for EN12464-1 / LG7 (<math><3000\text{ cd/m}^2\text{ @ }65^\circ</math>) compliance or opal version
- Fire-retardant external plastic parts
- Designed to exclude dust, dirt and flies
- SmartScan wireless technology removes the need for control cabling. Ideal for retro-fit



IP40

Up to 138.8 LL/CW

SMARTSCAN

LUXGUARD

Lighting management

| | | | |
|-------------------------|---|------------------|--|
| Lighting control system | Dimming (DALI) Non-dimming SmartScan Internal | Emergency system | AutoTest Emergency Non-emergency SmartScan Emergency Standard Emergency |
|-------------------------|---|------------------|--|

Specification

| | | | |
|--------------|--------------------|-------------------------------|------|
| Mounting | Surface | IP rating | IP40 |
| Nominal size | 1200 mm 1500 mm | Max presence detection height | 8 m |

Lighting

| | | | |
|----------|-------------------------------------|--------------|---------------------|
| Optic | Low glare diffuser Opal diffuser | Lumen output | 2,190 lm - 6,510 lm |
| Efficacy | Up to 138.8 LL/CW | | |

Emergency data

| | | | |
|------------------------|-----------------|-----------------------|-----------------------------|
| Emergency lumen output | 330 lm - 380 lm | Emergency type | Maintained |
| Emergency duration | 3 hours | Battery specification | Nickel Metal Hydride (NiMH) |

Power

| | | | |
|-----------|-------------|---------------|-------------|
| LED power | 15 W - 43 W | Circuit power | 19 W - 49 W |
|-----------|-------------|---------------|-------------|

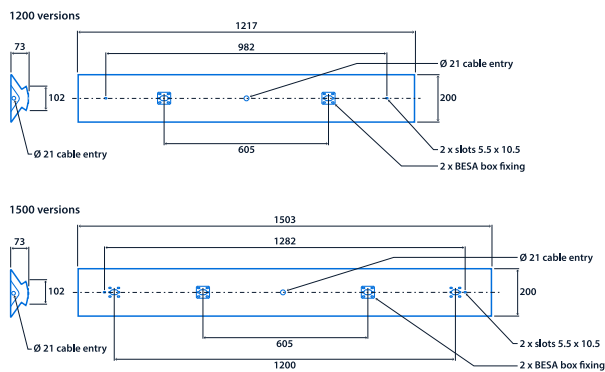
LED characteristics

| | | | |
|--------------------|----------------|--------------------|--------|
| CRI | 80+ | Colour temperature | 4000 K |
| Rated life (hours) | 90 K - L80/B10 | | |

Compliance

| | | | |
|-------------------------|--|---|--|
| UKCA | Yes | CE | Yes |
| Energy efficiency class | This product contains a light source of energy efficiency class B | SmartScan wireless standards compliance | Europe: EN 300 220-1 V2.4.1/ EN 301 489-3 V1.6.1. Australasia: ACMA 2014 Radio Communication Standard 2014. Thorlux Patented Wireless Technology - GB2575724 |

Dimensions



Information is correct as of 16 Oct 2024, however must not be interpreted as a guarantee of individual product performance and/or characteristics. We reserve the right to alter specifications and designs without prior notice.