

Suspended direct/indirect LED luminaires

High performance LED. Available as individually suspended, end to end or continuous versions using infill sections and corner joints. Ultra-slim-line, with excellent uniform upward light performance. Supplied pre-wired and fully assembled, complete with suspensions, for rapid installation.

Infill sections are complete with interconnecting wiring and can contain spotlights or emergency SmartScan LED downlighters.

Applications: Offices, school, libraries.

- Direct/indirect illumination
- Individual or continuous mounting options
- Supplied fully assembled
- Supplied with easily adjustable wire suspensions

Notes: It is recommended that a maximum of 10 Light Line Continuous luminaires are connected to each 10A fused light circuit



IP20

Up to 143.4 LL/CW

SMARTSCAN

LUXGUARD

Specification

Mounting	Suspended	IP rating	IP20
Max presence detection height	8 m		

Lighting

Lumen output	4,015 lm - 6,485 lm	Efficacy	Up to 143.4 LL/CW
--------------	---------------------	----------	-------------------

Emergency data

Emergency lumen output	370 lm	Emergency type	Maintained
Emergency duration	3 hours	Battery specification	Nickel Metal Hydride (NiMH)

Power

LED power	24 W - 42 W	Circuit power	28 W - 48 W
-----------	-------------	---------------	-------------

LED characteristics

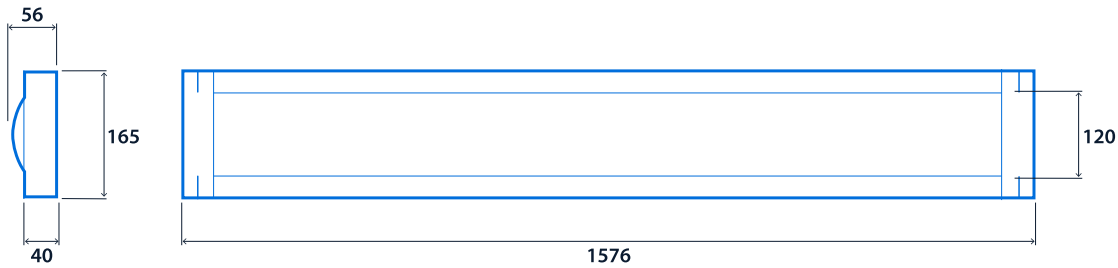
CRI	80+	Colour temperature	4000 K
Rated life (hours)	90 K - L80/B10		

Compliance

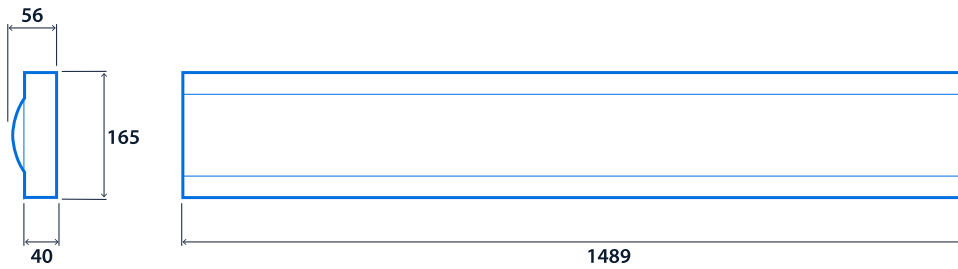
UKCA	Yes	CE	Yes
Energy efficiency class	This product contains a light source of energy efficiency class A		

Dimensions

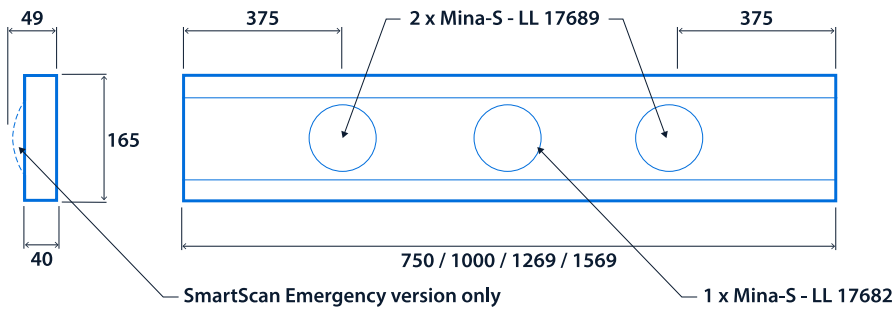
Light Line Individual



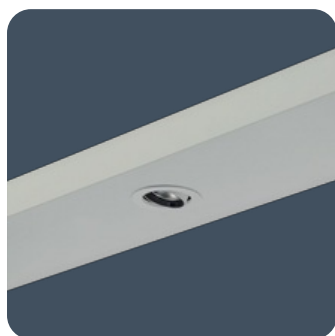
Light Line Continuous



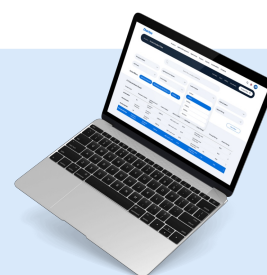
Light Line Infill



Thorlux Light Line



Click or scan here
View Thorlux Light Line
variants using our online
filtering tool



Information is correct as of 22 Jan 2025, however must not be interpreted as a guarantee of individual product performance and/or characteristics. We reserve the right to alter specifications and designs without prior notice.